

ABBYY®

1.				3
1.1.				3
2.				4
2.1.				4
2.2.				4
3.				6
3.1.				5
	%			
3.1.1.				8
3.2.		(%),	9
3.2.1.		(%),	11
3.3.				13
	%			
3.3.1.				14
3.4.		(%),	15
3.4.1.		(%)	16
	,			
4.				17
4.1.				17
4.2.				17
4.3.				21
4.4.				21

1.

1.1 Общие характеристики проведённой работы

2

07/9/2016 - 21/9/2016 .

- ,

8

14.38

38

38%

2.

2.1.

	-	.	%
12	8	14.38	38%
	451	21.97	58%
" "	5989	20.80	55%
	8443	22.28	59%

2.2.

	-	.	%
11	8	14.38	38%
12	8	14.38	38%

3.1.

%

		.% .
6.6		88%
8.6	-	68%
6.10		63%
7.18		63%
7.2		63%
2.1		50%
2.2	.	50%
2.3		50%
2.4		50%
2.5		50%
6.16	,	50%
8.2		50%
9.1		50%
9.2		50%
6.7	(- -/- -)	38%
7.12		38%
7.7	()	38%
8.1	.	38%
7.13		25%
7.15		25%
10.5		13%
6.11		13%

6.13		13%
6.5		13%
6.8	- - - -	13%
7.8	,	13%
9.4	()	13%
8.3	-	0%
9.3	()	0%

3.1.1.

		11
2.1		50%
2.2		50%
2.3		50%
2.4		50%
2.5		50%
6.5		13%
6.6		88%
6.7	(- -/ -)	38%
6.8	- - - -	13%
6.10		63%
6.11		13%
6.13		13%
6.16	, ,	50%
7.2		63%
7.7	()	38%
7.8	,	13%
7.12		38%
7.13		25%
7.15		25%
7.18		63%
8.1	.	38%
8.2		50%
8.3	-	0%
8.6	-	68%
9.1		50%

3.1.1.

		11
9.2		50%
9.3	()	0%
9.4	()	13%
10.5		13%

3.2.

(%

),

		. % .
		50%
2.5		50%
2.4		50%
2.3		50%
2.2	. .	50%
2.1		50%
		41%
8.6	-	68%
8.2		50%
8.1	.	38%
8.3	-	0%
		38%
7.18		63%
7.2		63%
7.12		38%
7.7	()	38%
7.15		25%
7.13		25%
7.8	,	13%
		36%
6.6		88%
6.10		63%
6.16	, ,	50%

		.% .
6.7	-/- -) (-	38%
6.13		13%
6.11		13%
6.8	- - - -	13%
6.5		13%
		28%
9.2		50%
9.1		50%
9.4	()	13%
9.3	()	0%
		13%
10.5		13%

3.2.1.

(%

),

			11
	2.1		50%
	2.2		50%
	2.3		50%
	2.4		50%
	2.5		50%
	6.5		13%
	6.6		88%
	6.7	(- -/- -)	38%
	6.8	- - - -	13%
	6.10		63%
	6.11		13%
	6.13		13%
	6.16		50%
	7.2		63%
	7.7	()	38%
	7.8		13%
	7.12		38%
	7.13		25%
	7.15		25%
	7.18		63%
	8.1		38%
	8.2		50%
	8.3	-	0%
	8.6	-	68%
	9.1		50%
	9.2		50%
	9.3	()	0%
	9.4	()	13%

			11
	10.5		13%

3.3.

%

		.% .
3.1	- , - (;	68%
3.2	' , ;	68%
3.3		68%
3.4	, D53	68%
2.1	, - (.) -	42%
2.3		41%
1.4	, , - ,	40%
2.2	: - , ,	40%
1.1		33%
1.2	;	13%
1.3	,	13%

3.3.1.

		11
1.1	,	33%
1.2	; ,	13%
1.3	,	13%
1.4	,- ,	40%
2.1	-) (- ,	42%
2.2	; ,	40%
2.3		41%
3.1	-) , - (;	68%
3.2	; ,	68%
3.3		68%
3.4	, D53	68%

3.4. (%,),

		.% .
		68%
3.4	, D53	68%
3.3		68%
3.2	, ;	68%
3.1	- , - , (;	68%
		41%
2.1	, - (.) -	42%
2.3		41%
2.2	: - ,	40%
		33%
1.4	, , - ,	40%
1.1	,	33%
1.3	,	13%
1.2	; ,	13%

3.4.1.

(%) ,

			11
	1.1	,	33%
	1.2	;	13%
	1.3	,	13%
	1.4	- , ,	40%
	2.1	- .) (- ,	42%
	2.2	, , : -	40%
	2.3		41%
	3.1	- , - (,) ;	68%
	3.2	; ,	68%
	3.3		68%
	3.4	, D53	68%

4.

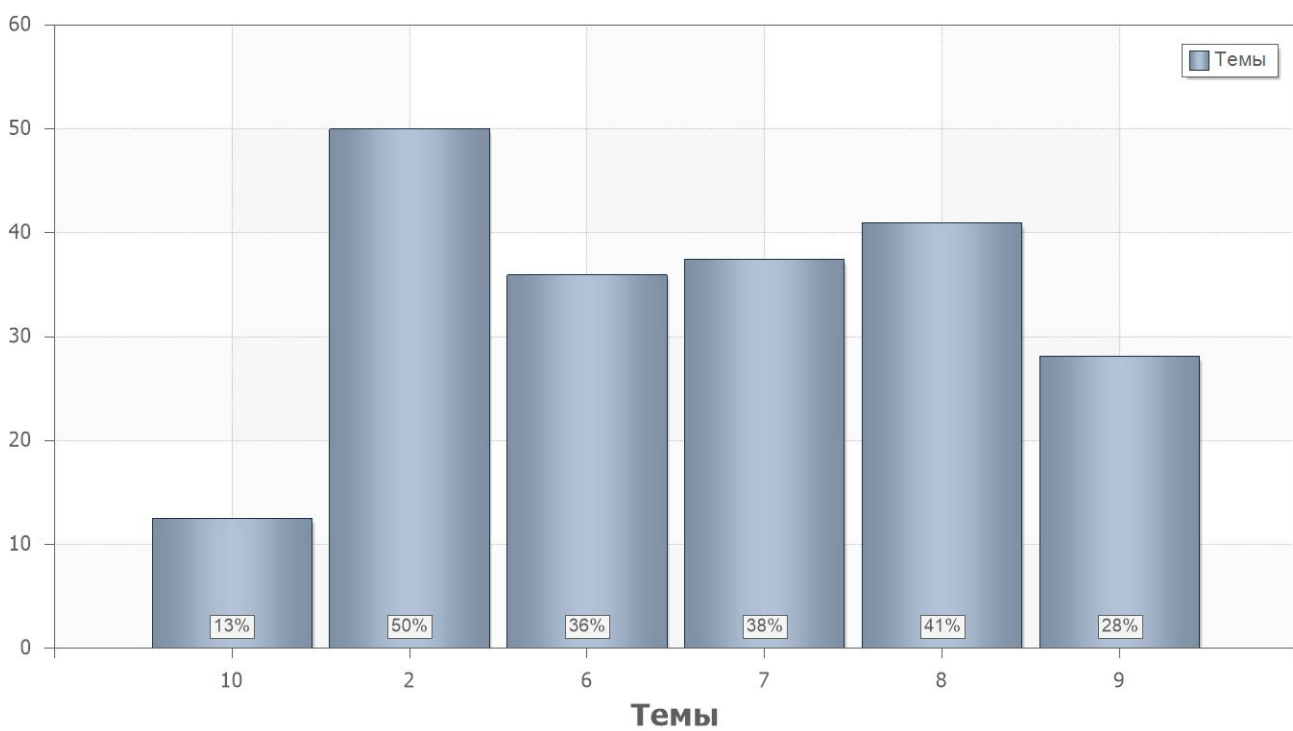
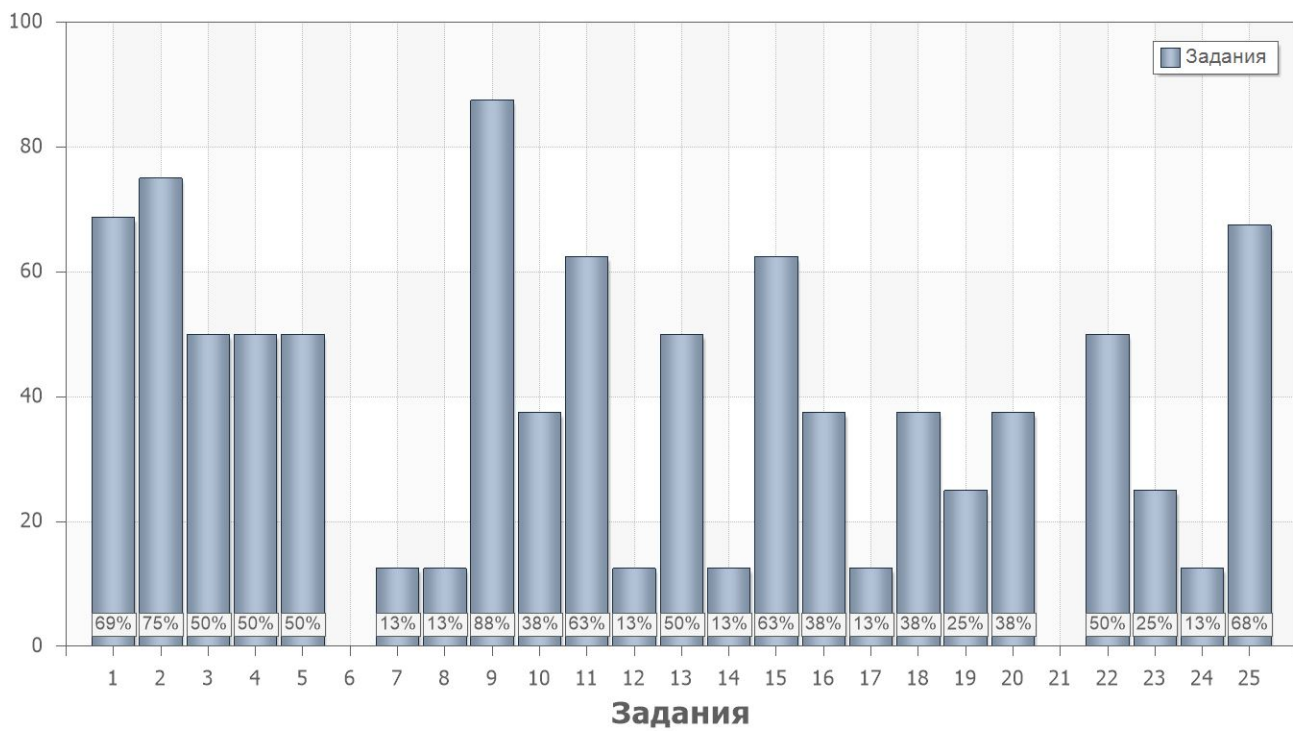
4.1.

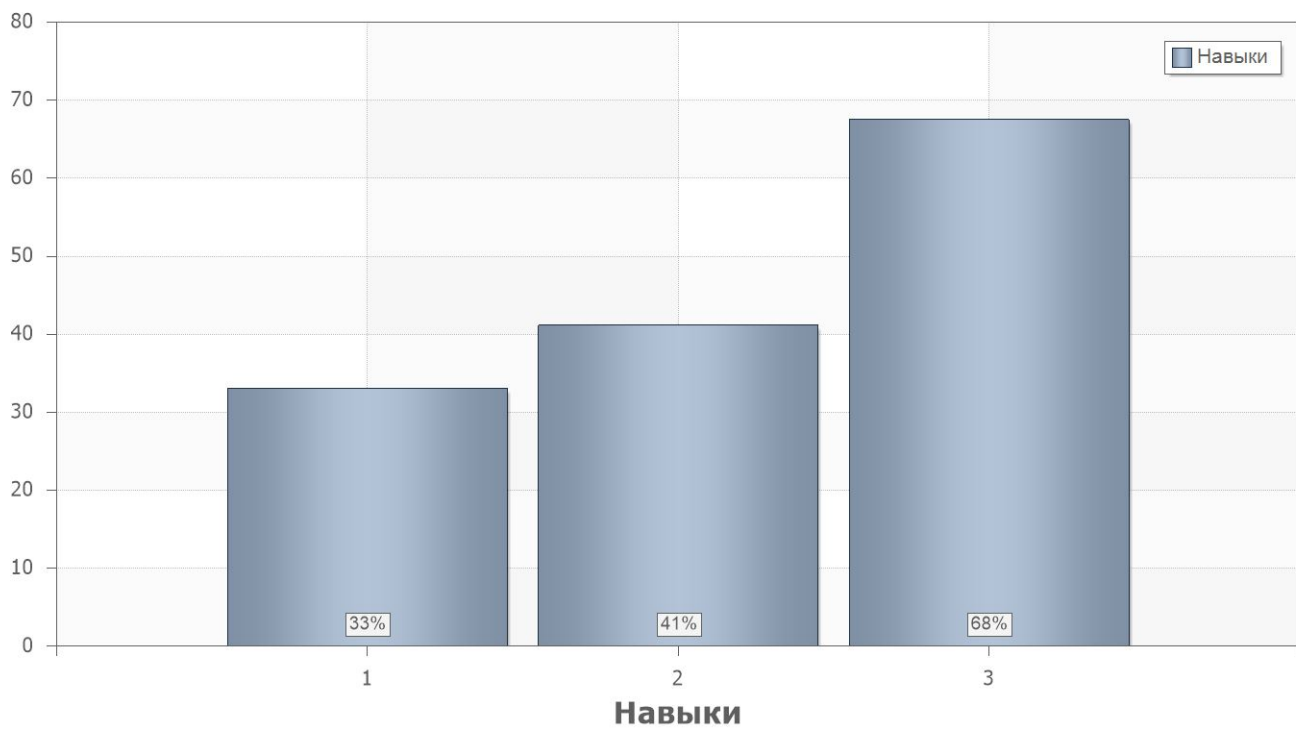
	. % .
2	40
1	36

4.2.

	. % .		
1			
1	69	11	2.1;2.2;2.3
2	75	8.2	1.4;2.1
3	50	2.1	1.1;1.4;2.1
4	50	9.1	1.1
5	50	9.2	1.1
6	0	9.3	1.1
7	13	9.4	1.1
8	13	6.5	1.1
9	88	6.6	1.1
10	38	6.7	1.1
11	63	6.10	1.1
12	13	6.11;6.13	1.1
13	50	6.16	1.1
14	13	6.8	1.1
15	63	7.2;7.18	1.1
16	38	7.7	1.1
17	13	7.8	1.1
18	38	7.12	1.1
19	25	7.13;7.15	1.1

	. % .		
20	38	8.1	2.1;2.2
21	0	8.3	1.1;1.4;2.1
22	50	2.1;2.2;2.3;2.4;2.5	1.1;1.4;2.1
23	25	8.2	1.1;1.4
24	13	10.5	1.1;1.2;1.3;2.1;2.2;2.3
2			
25	68	11;8.6	3.1;3.2;3.3;3.4





4.3.

Name	11
1	36%
2	40%

4.4.

PartIndex	Number	11
1	1	69%
	2	75%
	3	50%
	4	50%
	5	50%
	6	0%
	7	13%
	8	13%
	9	88%
	10	38%
	11	63%
	12	13%
	13	50%
	14	13%
	15	63%
	16	38%
	17	13%
	18	38%
	19	25%
	20	38%
	21	0%
	22	50%
	23	25%
	24	13%
2	25	68%