

ABBYY®

1.				3
1.1.				3
2.				4
2.1.				4
2.2.				4
3.				6
3.1.				5
	%			
3.1.1.				8
3.2.		(%),	9
3.2.1.		(%),	11
3.3.				13
	%			
3.3.1.				14
3.4.		(%),	15
3.4.1.		(%)	16
	,			
4.				17
4.1.				17
4.2.				17
4.3.				20
4.4.				20

1.

1.1 Общие характеристики проведённой работы

1

07/9/2016 - 25/10/2016 .

- ,

40

8.70

17

51%

2.

2.1.

	-	.	%
12	40	8.70	51%
	720	8.85	52%
" "	10903	8.98	53%
	14975	9.30	55%

2.2.

	-	.	%
9	21	10.10	59%
9	19	7.16	42%
12	40	8.70	51%

3.1.

%

		.% .
8.1	.	83%
2.2	. .	82%
2.4		82%
6.1		82%
7.18		82%
8.4	, ,	82%
8.6	-	82%
9.2		82%
9.3	()	82%
9.4	()	82%
6.10		78%
6.7	(- -/ - -)	78%
6.8	- - - -	78%
6.16	, ,	65%
6.6		65%
7.8	,	60%
5.13		40%
7.19		37%
10.1		32%
5.7		30%
7.2		30%
7.3		30%

7.4		30%
7.5		30%
7.7	()	30%
5.1		25%
5.2	()	22%
5.8		7%
7.11		7%
7.12		7%

3.1.1.

		9	9
2.2		84%	81%
2.4		84%	81%
5.1		0%	48%
5.2	()	10%	33%
5.7		18%	41%
5.8		15%	0%
5.13		21%	58%
6.1		75%	87%
6.6		52%	76%
6.7	(- -/ -)	69%	86%
6.8	- - - - -	69%	86%
6.10		69%	86%
6.16	, ,	52%	76%
7.2		18%	41%
7.3		18%	41%
7.4		18%	41%
7.5		18%	41%
7.7	()	18%	41%
7.8	,	47%	72%
7.11		15%	0%
7.12		15%	0%
7.18		75%	87%
7.19		29%	45%
8.1		77%	89%
8.4	, ,	75%	87%

3.1.1.

		9	9
8.6	-	75%	87%
9.2		75%	87%
9.3	()	75%	87%
9.4	()	75%	87%
10.1		30%	34%

3.2.

(%

),

		. % .
		83%
8.1	.	83%
8.6	-	82%
8.4	,	82%
		82%
2.4		82%
2.2	.	82%
		82%
9.4	()	82%
9.3	()	82%
9.2		82%
		74%
6.1		82%
6.10		78%
6.8	- - - -	78%
6.7	-/- -) (-	78%
6.16	,	65%
6.6		65%
		35%
7.18		82%
7.8	,	60%
7.19		37%
7.7	()	30%

		. % .
7.5		30%
7.4		30%
7.3		30%
7.2		30%
7.12		7%
7.11		7%
		32%
10.1		32%
		25%
5.13		40%
5.7		30%
5.1		25%
5.2	. ()	22%
5.8		7%

3.2.1.

(%),

			9	9
	2.2		84%	81%
	2.4		84%	81%
	5.1		0%	48%
	5.2	()	10%	33%
	5.7		18%	41%
	5.8		15%	0%
	5.13		21%	58%
	6.1		75%	87%
	6.6		52%	76%
	6.7	(- -/ - -)	69%	86%
	6.8	- - - -	69%	86%
	6.10		69%	86%
	6.16		52%	76%
	7.2		18%	41%
	7.3		18%	41%
	7.4		18%	41%
	7.5		18%	41%
	7.7	()	18%	41%
	7.8		47%	72%
	7.11		15%	0%
	7.12		15%	0%
	7.18		75%	87%
	7.19		29%	45%
	8.1		77%	89%
	8.4		75%	87%
	8.6		75%	87%
	9.2		75%	87%

			9	9
	9.3	()	75%	87%
	9.4	()	75%	87%
	10.1		30%	34%

3.3.

%

		.% .
2.3	(,)	85%
2.1	(,)	83%
2.4		83%
1.3	, , -	82%
3.1	(, ,)	82%
3.3	, ,	82%
3.5	(, , , , .)	82%
3.6	: ,	82%
3.8		82%
3.9	(,)	82%
3.10	; ;	82%
1.1	,	38%

3.3.1.

		9	9
1.1	,	27%	48%
1.3	' , ' - ' ,	84%	81%
2.1	(, ,)	77%	89%
2.3	() , ' ,	78%	91%
2.4		77%	89%
3.1) (, ' ,	75%	87%
3.3		75%	87%
3.5	' , (, ,) , ' ,	75%	87%
3.6	:	75%	87%
3.8		75%	87%
3.9	() ,	75%	87%
3.10	;	75%	87%

3.4.

(%

),

		.% .
		84%
2.3	(,) ,	85%
2.4		83%
2.1	(,) ,	83%
		82%
3.10	; , , ;	82%
3.9	(,)	82%
3.8		82%
3.6	: ,	82%
3.5	(, , , , ,)	82%
3.3	, ,	82%
3.1	(, ,)	82%
		42%
1.3	, , , -	82%
1.1	,	38%

3.4.1.

(%) ,

			9	9
	1.1	,	27%	48%
	1.3	, , - ,	84%	81%
	2.1	(, ,)	77%	89%
	2.3	() , ,	78%	91%
	2.4		77%	89%
	3.1) (, ,	75%	87%
	3.3	, ,	75%	87%
	3.5	, (, ,) ,	75%	87%
	3.6	: , ,	75%	87%
	3.8		75%	87%
	3.9	() ,	75%	87%
	3.10	, ; , , ;	75%	87%

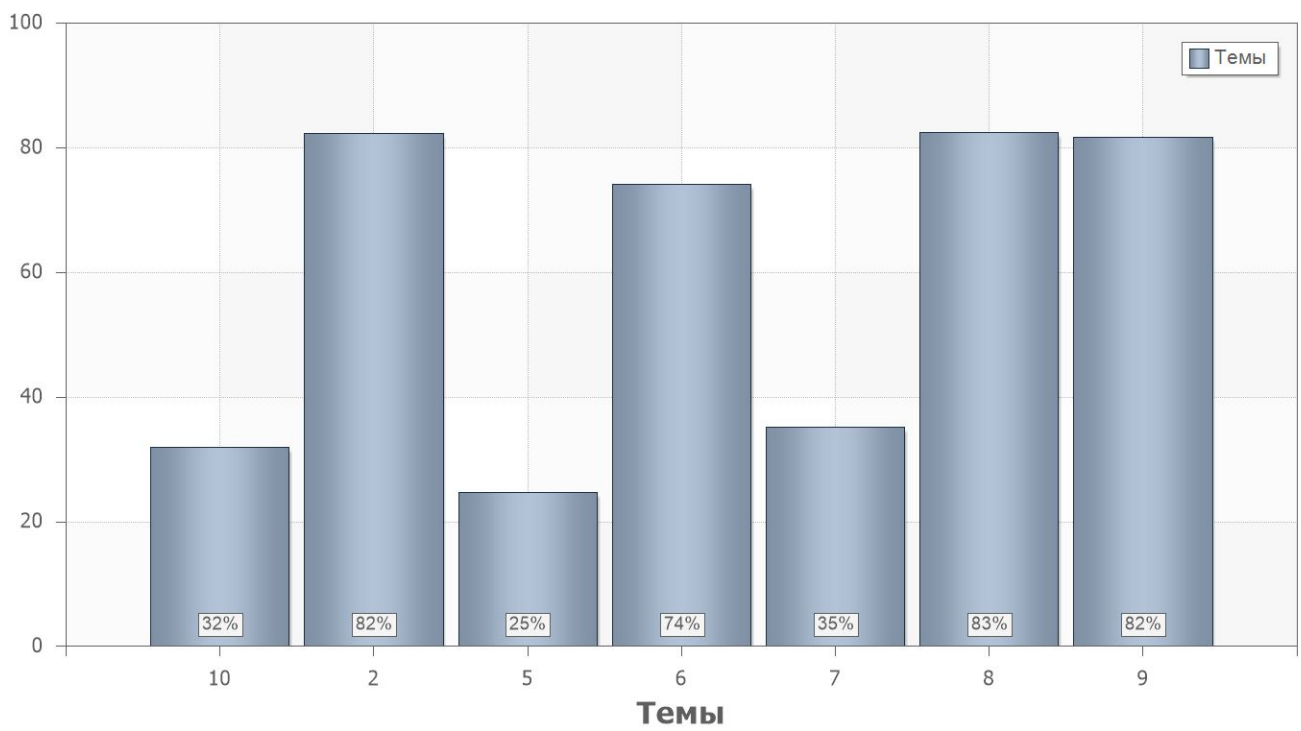
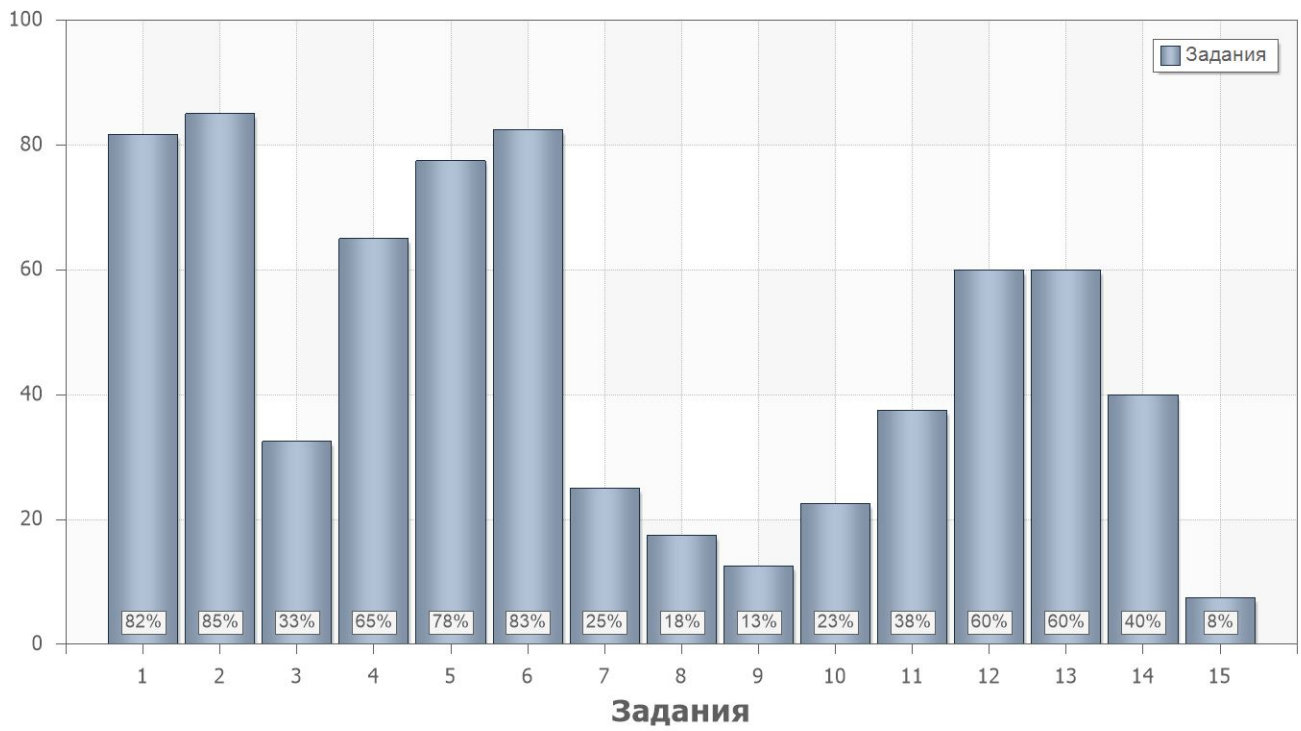
4.

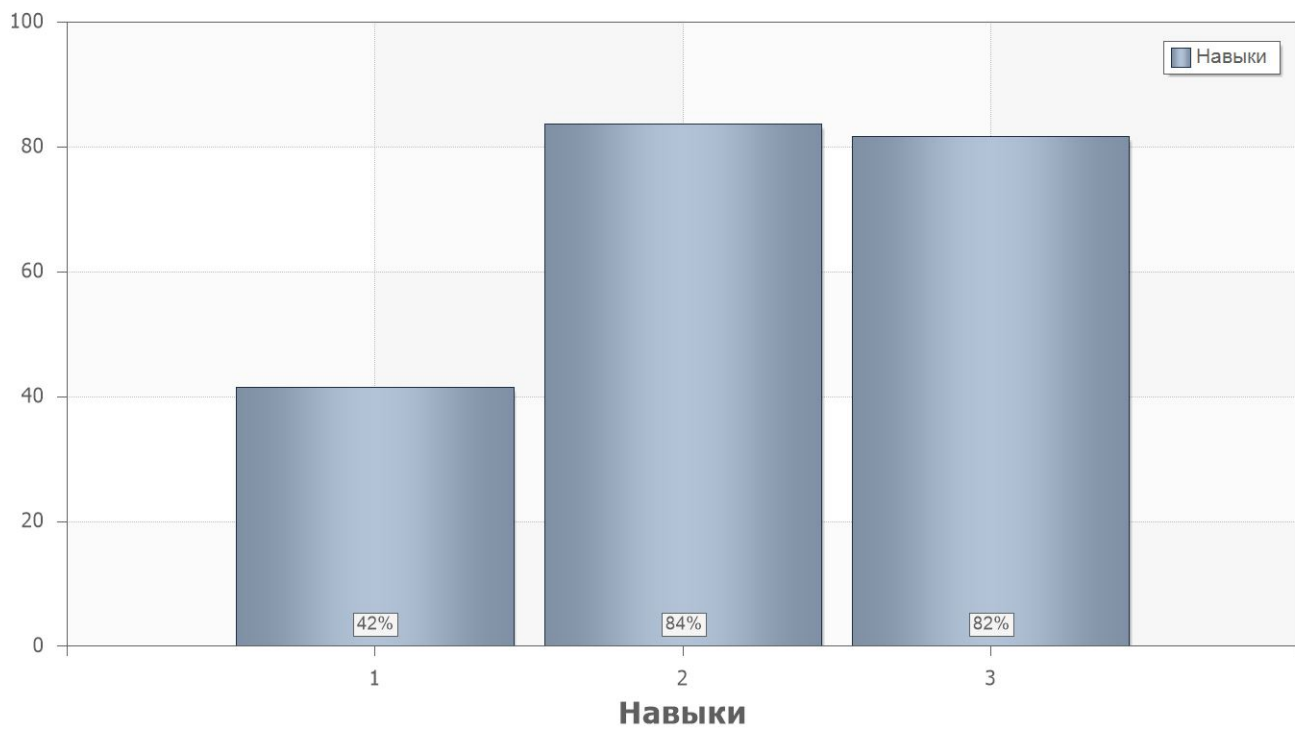
4.1.

	. % .
1	52
2	51

4.2.

	. % .		
1			
1	82	11;6.1;8.1;8.4;8.6;9.2;9.3;9.4;7.18	2.1;2.4;3.1;3.3;3.5;3.6;3.8;3.9;3.10
2	85	8.1	2.1;2.3;2.4
3	33	10.1	1.1
4	65	6.6;6.16	1.1
5	78	6.7;6.8;6.10	1.1
6	83	2.2;2.4	1.3
7	25	5.1	1.1
8	18	5.2	1.1
9	13	5.2	1.1
10	23	5.2;5.7;7.2;7.3;7.4;7.5;7.7;7.19	1.1
11	38	5.2;5.7;7.2;7.3;7.4;7.5;7.7;7.19	1.1
12	60	7.8;7.19	1.1
13	60	7.8;7.19	1.1
14	40	5.13	1.1
15	8	5.8;7.11;7.12;7.19	1.1





4.3.

Name	9	9
1	48%	55%
2	35%	65%

4.4.

PartIndex	Number	9	9
1	1	75%	87%
	2	79%	90%
	3	32%	33%
	4	53%	76%
	5	68%	86%
	6	84%	81%
	7	0%	48%
	8	5%	29%
	9	0%	24%
	10	21%	24%
	11	16%	57%
	12	53%	67%
	13	42%	76%
	14	21%	57%
	15	16%	0%