

ABBYY®

1.				3
1.1.				3
2.				4
2.1.				4
2.2.				4
3.				5
3.1.				5
		%		5
3.1.1.				6
3.2.			(% ,)	7
3.2.1.			(% ,)	9
3.3.				10
		%		10
3.3.1.				11
3.4.			(% ,)	12
3.4.1.			(%)	14
	,			14
4.				16
4.1.				16
4.2.				16
4.3.				19
4.4.				19

1.

1.1 Общие характеристики проведённой работы

2

09/9/2016 - 30/9/2016 .

()

- ,

8

11.13

15

74%

2.

2.1.

	-	.	%
12	8	11.13	74%
	444	10.35	69%
" "	5947	10.30	69%
	8401	10.74	72%

2.2.

	-	.	%
11	8	11.13	74%
12	8	11.13	74%

3.1.

%

		.% .
1.1.4		88%
1.1.5	n > 1	88%
1.4.3	,	88%
5.1.1		88%
5.1.4		88%
5.5.1	, ,	88%
5.5.3	, , ,	88%
1.4.2	,	83%
1.1.1		75%
3.1.3	.	75%
6.2.1		75%
6.3.1		75%
1.1.3	, ,	72%
2.1.12	. ,	65%
3.2.1	.	63%
3.2.6		63%
1.4.1	,	42%

3.1.1.

		11
1.1.1		75%
1.1.3	, ,	72%
1.1.4		88%
1.1.5	n > 1	88%
1.4.1	, ,	42%
1.4.2	, ,	83%
1.4.3	, ,	88%
2.1.12	, ,	65%
3.1.3	, ,	75%
3.2.1	, ,	63%
3.2.6	, ,	63%
5.1.1	, ,	88%
5.1.4	, ,	88%
5.5.1	, , ,	88%
5.5.3	, , , ,	88%
6.2.1	, ,	75%
6.3.1	, ,	75%

3.2.

(%

),

		. % .
		88%
5.5.3	' , ' , ' ,	88%
5.5.1	' , ' , ' ,	88%
		88%
5.1.4		88%
5.1.1		88%
		77%
1.1.5	n > 1	88%
1.1.4		88%
1.1.1		75%
1.1.3	' , ' , ' ,	72%
		75%
3.1.3		75%
		75%
6.2.1		75%
		75%
6.3.1		75%
		69%
1.4.3	' , ' , ' ,	88%
1.4.2	' , ' , ' ,	83%
1.4.1	' , ' , ' ,	42%
		65%
2.1.12	' , ' , ' ,	65%

		. % .
		63%
3.2.6		63%
3.2.1		63%

3.2.1.

(%),

			11
	1.1.1		75%
	1.1.3		72%
	1.1.4		88%
	1.1.5	n > 1	88%
	1.4.1		42%
	1.4.2		83%
	1.4.3		88%
	2.1.12		65%
	3.1.3		75%
	3.2.1		63%
	3.2.6		63%
	5.1.1		88%
	5.1.4		88%
	5.5.1		88%
	5.5.3		88%
	6.2.1		75%
	6.3.1		75%

3.3.

%

		. % .
4.1	(, ,)	88%
5.2	, ; ,	88%
1.1	; , ,	83%
6.1	; ; ,	75%
6.2	; , ,	75%
5.3	, ,	75%
5.4	,	75%
3.3	,	63%
5.1	, ;	58%
6.3	, , -	50%

3.3.1.

		11
1.1	;	83%
3.3	,	63%
4.1	(, ,)	88%
5.1	;	58%
5.2	;	88%
5.3	,	75%
5.4	,	75%
6.1	;	75%
6.2	;	75%
6.3	,	50%

3.4.

(%

),

		.% .
	,	88%
4.1	(, ,)	88%
		83%
1.1	;	83%
	,	70%
6.2	;	75%
	,	
6.1	;	75%
	,	
6.3	,	50%
		69%
5.2	,	88%
	,	
5.4	,	75%
5.3	,	75%
5.1	,	58%

		.% .
		63%
3.3	,	63%

3.4.1.

(%) ,

			11
	1.1	; , ,	83%
	3.3	,	63%
	4.1	(, ,)	88%
	5.1	; ,	58%
	5.2	; , ,	88%
	5.3	, ,	75%
	5.4	,	75%
	6.1	; , ;	75%
	6.2	; , ,	75%

	6.3	,	,	50%
--	-----	---	---	-----

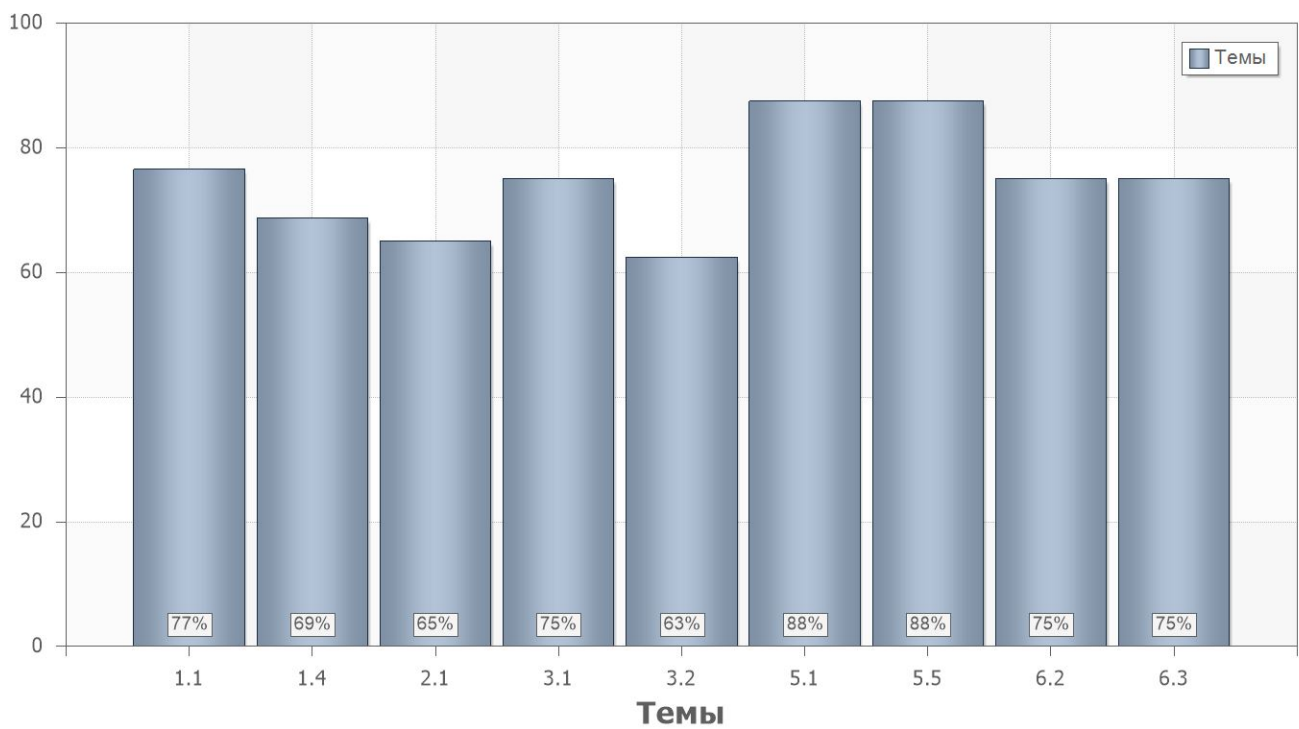
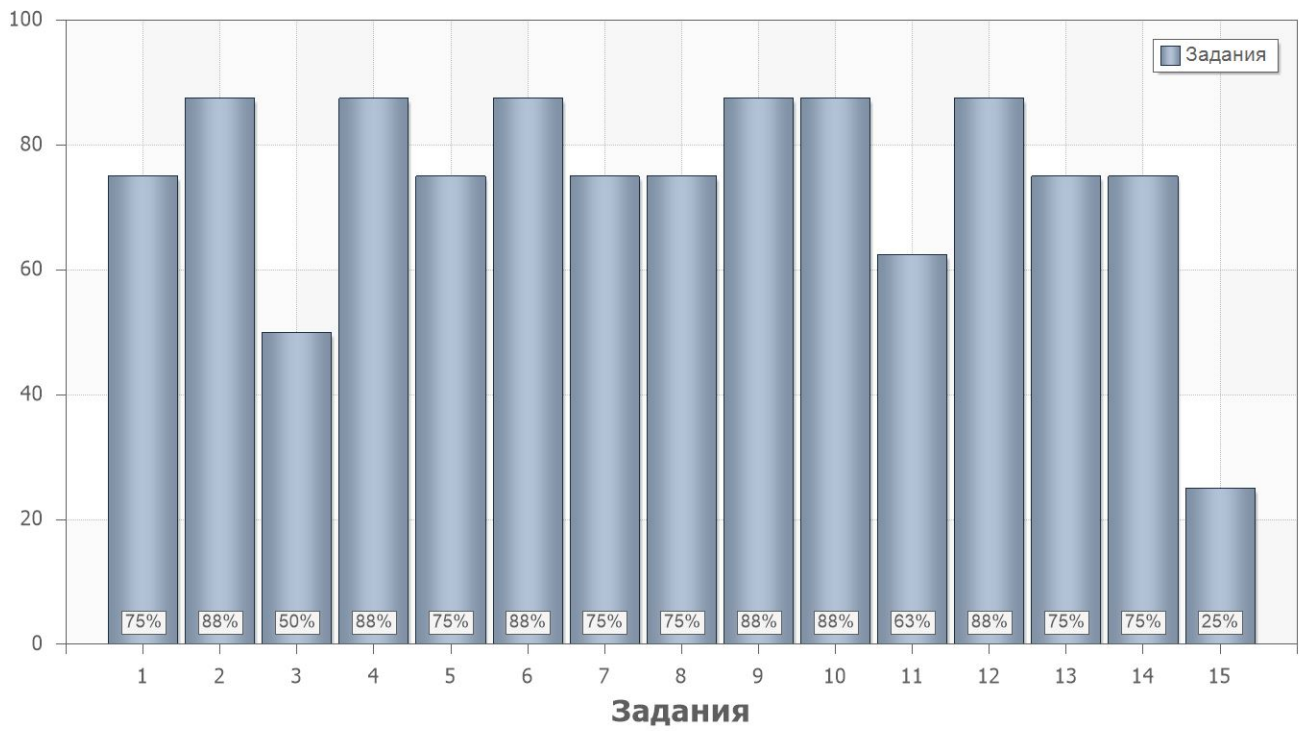
4.

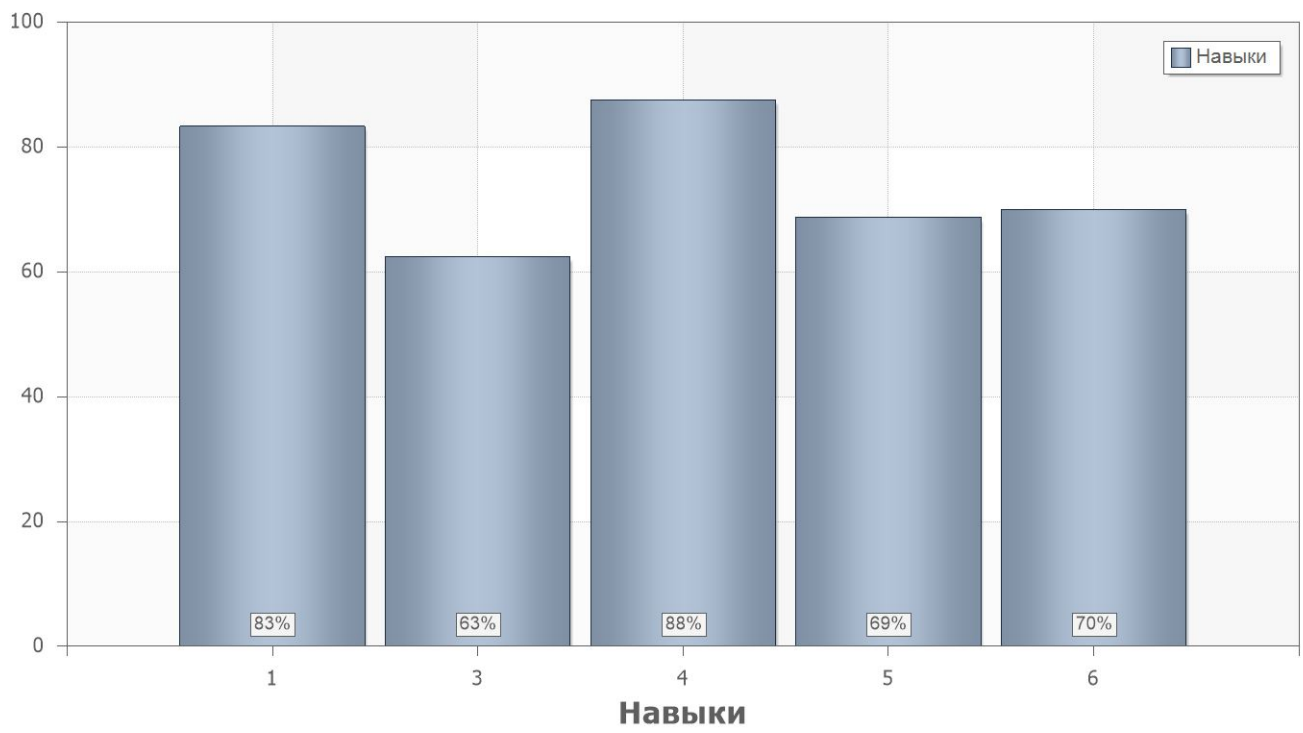
4.1.

	. % .
1	63
2	85

4.2.

	. % .		
1			
1	75	1.1.1;1.1.3;1.4.1	1.1
2	88	1.1.3;1.1.4;1.4.2	1.1
3	50	1.1.3	6.3
4	88	1.1.5;1.4.3	1.1
5	75	1.1.1;1.1.3;2.1.12	6.1
6	88	5.1.1;5.5.3	4.1;5.2
7	75	6.2.1;2.1.12	5.1;6.1
8	75	6.3.1	5.4
9	88	3.1.3;6.2.1	6.2
10	88	5.1.4;5.5.3	4.1
11	63	3.1.3;3.2.1;3.2.6;6.2.1	3.3;6.2
12	88	5.5.1	4.1
13	75	2.1.12	5.3
14	75	2.1.12	5.1
15	25	1.4.1;2.1.12	5.1





4.3.

Name	11
1	63%
2	85%

4.4.

PartIndex	Number	11
1	1	75%
	2	88%
	3	50%
	4	88%
	5	75%
	6	88%
	7	75%
	8	75%
	9	88%
	10	88%
	11	63%
	12	88%
	13	75%
	14	75%
	15	25%