

ABBYY®

1.				3
1.1.				3
2.				4
2.1.				4
2.2.				4
3.				5
3.1.				5
		%		5
3.1.1.				6
3.2.			(% ,)	7
3.2.1.			(% ,)	8
3.3.				9
		%		9
3.3.1.				10
3.4.			(% ,)	11
3.4.1.			(%)	12
	,			12
4.				14
4.1.				14
4.2.				14
4.3.				17
4.4.				17

1.

1.1 Общие характеристики проведённой работы

1

09/9/2016 - 30/9/2016 .

()

- ,

40

8.28

15

55%

2.

2.1.

	-	.	%
12	40	8.28	55%
	699	7.10	47%
" "	10825	7.65	51%
	14951	7.79	52%

2.2.

	-	.	%
9	21	9.24	62%
9	19	7.21	48%
12	40	8.28	55%

3.1.

%

		.% .
6.0		81%
1.0		71%
5.0		63%
3.0		58%
8.0		54%
7.0		49%
2.0		40%

3.1.1.

		9	9
1.0		60%	81%
2.0		29%	50%
3.0		56%	60%
5.0		43%	80%
6.0		74%	88%
7.0		44%	53%
8.0		48%	60%

3.2.

(%

),

		. % .
		81%
6.0		81%
		71%
1.0		71%
		63%
5.0		63%
		58%
3.0		58%
		54%
8.0		54%
		49%
7.0		49%
		40%
2.0		40%

3.2.1.

(%),

			9	9
	1.0		60%	81%
	2.0		29%	50%
	3.0		56%	60%
	5.0		43%	80%
	6.0		74%	88%
	7.0		44%	53%
	8.0		48%	60%

3.3.**%**

		. % .
1.0		80%
4.0		63%
3.0	,	61%
7.0	,	51%
5.0	,	49%
7.8	,	46%
2.0		37%

3.3.1.

		9	9
1.0		69%	90%
2.0		21%	52%
3.0	,	63%	59%
4.0		43%	80%
5.0	,	49%	49%
7.0	,	42%	59%
7.8	,	37%	54%

3.4.

(%

),

		. % .
		80%
1.0		80%
		63%
4.0		63%
	,	61%
3.0	,	61%
	,	50%
7.0	,	51%
7.8	,	46%
	,	49%
5.0	,	49%
		37%
2.0		37%

3.4.1.

(%) ,

			9	9
	1.0		69%	90%
	2.0		21%	52%
,	3.0	,	63%	59%
	4.0		43%	80%
,	5.0	,	49%	49%
	7.0	,	42%	59%

	7.8		37%	54%
--	-----	--	-----	-----

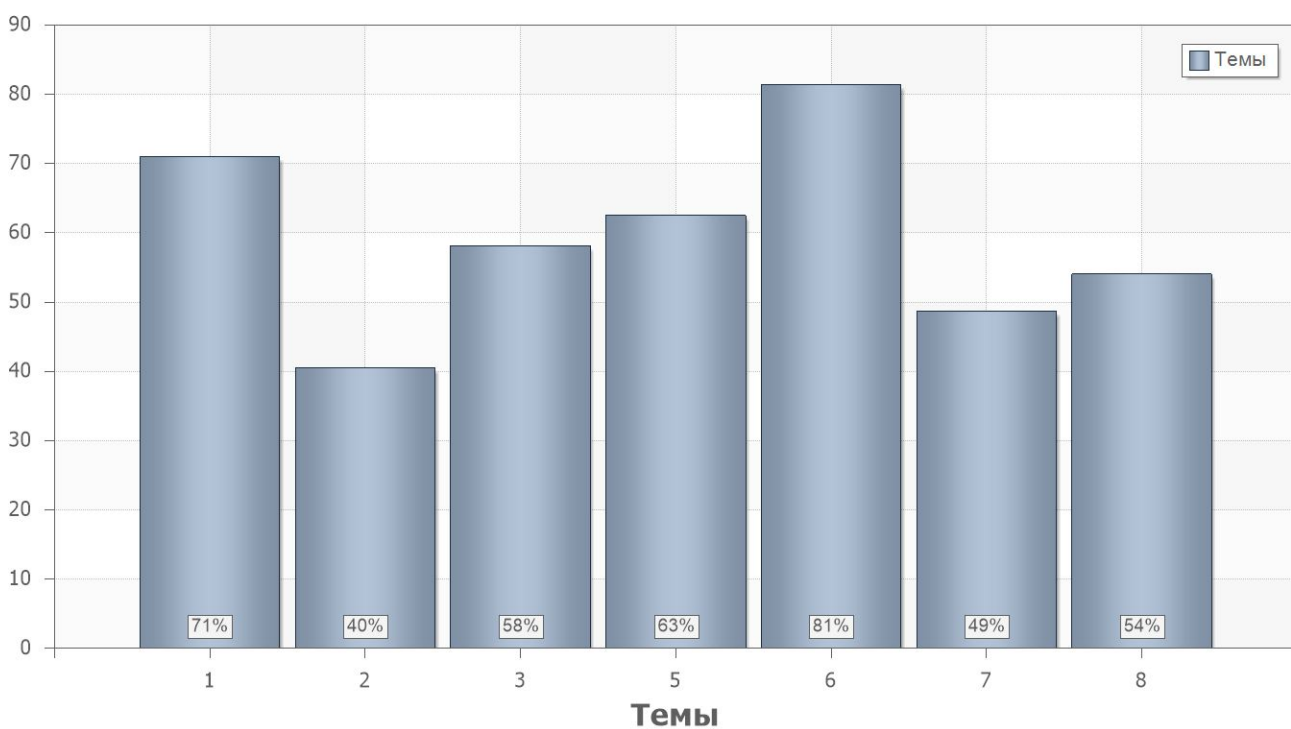
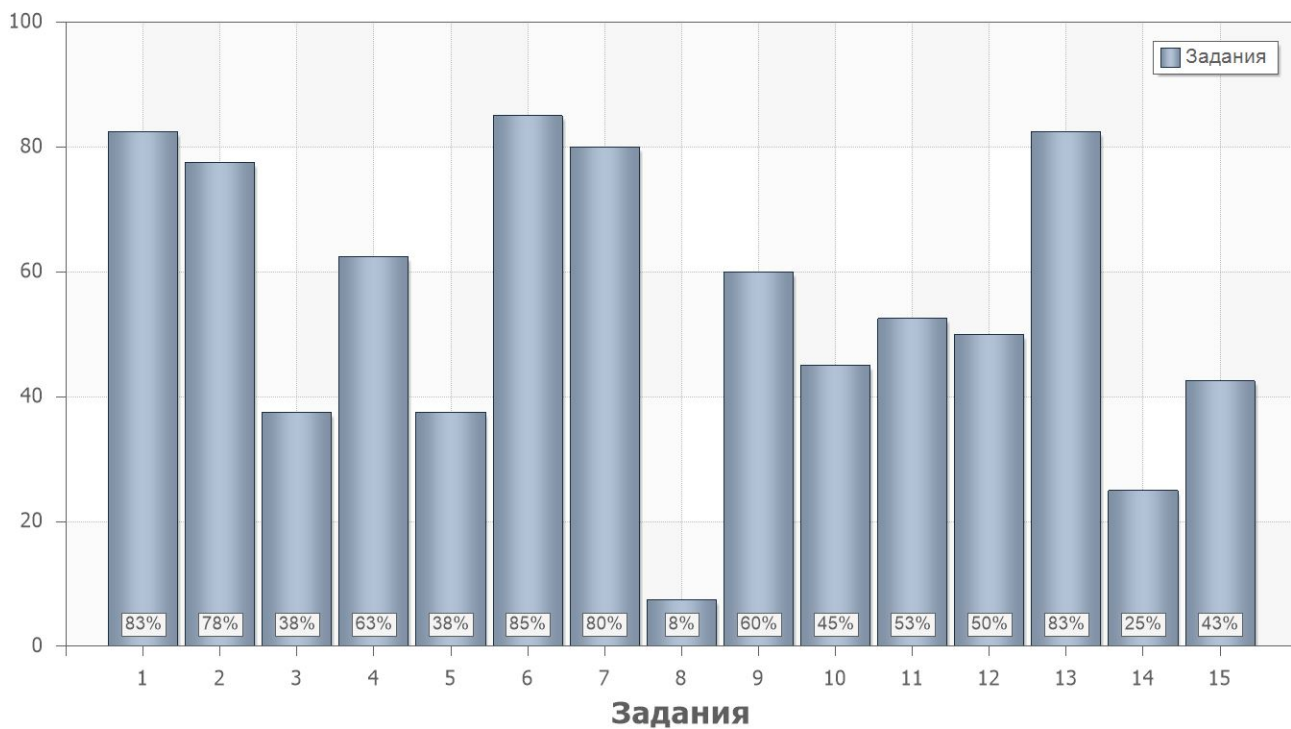
4.

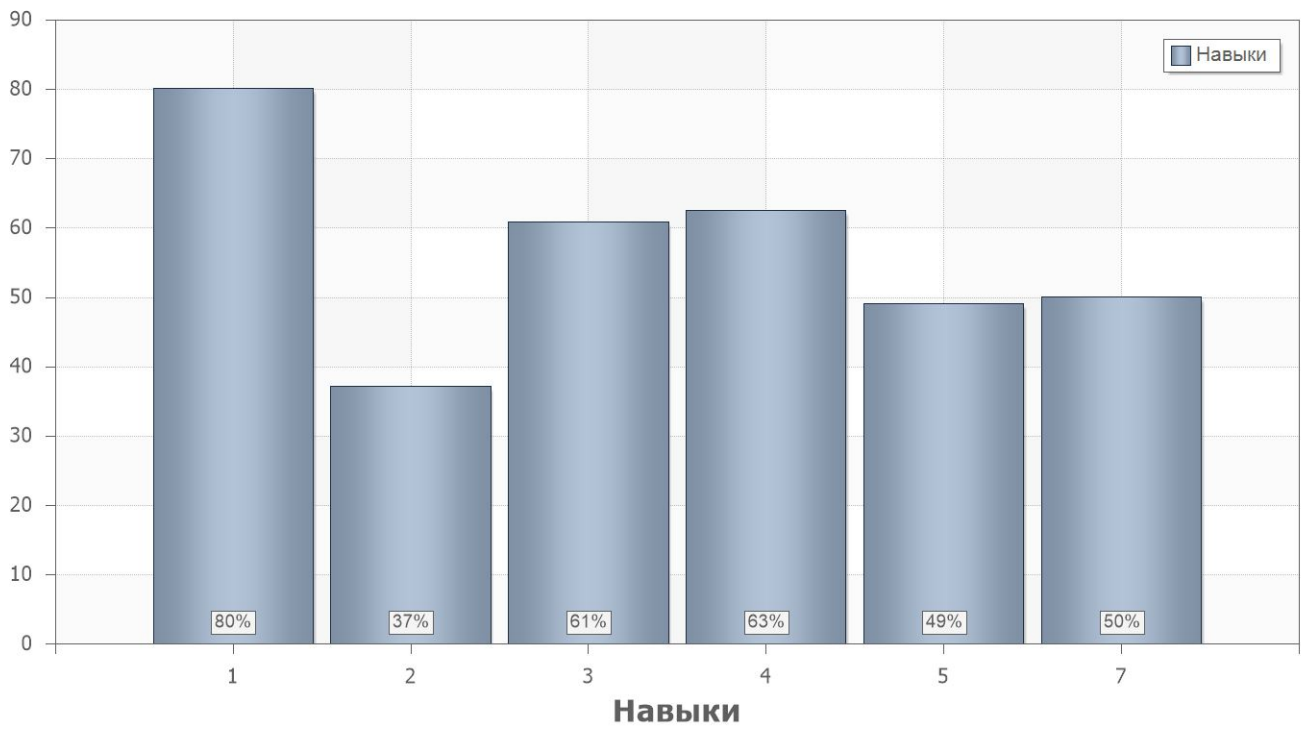
4.1.

	. % .
2	52
1	59

4.2.

	. % .		
1			
1	83	1.0	1.0
2	78	1.0;6.0	1.0
3	38	3.0	3.0
4	63	5.0	4.0
5	38	2.0	2.0
6	85	3.0;6.0	3.0
7	80	7.0	5.0
8	8	7.0	5.0
9	60	7.0	5.0
10	45	7.0	7.8
11	53	1.0;3.0	7.0
12	50	7.0	7.0
13	83	8.0	7.0
14	25	8.0	7.0
15	43	2.0	7.0





4.3.

Name	9	9
1	54%	63%
2	43%	61%

4.4.

PartIndex	Number	9	9
1	1	74%	90%
	2	63%	90%
	3	42%	33%
	4	42%	81%
	5	21%	52%
	6	84%	86%
	7	74%	86%
	8	16%	0%
	9	58%	62%
	10	37%	52%
	11	42%	62%
	12	37%	62%
	13	89%	76%
	14	5%	43%
	15	37%	48%