

ABBYY®

1.				3
1.1.				3
2.				4
2.1.				4
2.2.				4
3.				6
3.1.				5
	%			
3.1.1.				8
3.2.		(%),	9
3.2.1.		(%),	11
3.3.				13
	%			
3.3.1.				14
3.4.		(%),	15
3.4.1.		(%)	16
	,			
4.				17
4.1.				17
4.2.				17
4.3.				21
4.4.				21

1.

1.1 Общие характеристики проведённой работы

2

13/9/2016 - 23/10/2016 .

- ,

8

10.25

35

29%

2.

2.1.

	-	.	%
12	8	10.25	29%
	385	14.46	41%
" "	5387	13.22	38%
	7463	14.01	40%

2.2.

	-	.	%
11	8	10.25	29%
12	8	10.25	29%

3.1.**%**

		.% .
4.14		50%
4.15		50%
5.4		44%
1.0		38%
2.0		32%
4.0		31%
5.0		31%
3.0		30%
2.4		25%
4.1		6%
4.10		6%
4.11		6%
4.12		6%
4.13		6%
4.2		6%
4.3		6%
4.4		6%
4.5		6%
4.6		6%
4.7		6%
4.8		6%
4.9		6%
5.1		6%

5.10	.	6%
5.11		6%
5.12		6%
5.13	()	6%
5.14	,	6%
5.15		6%
5.16		6%
5.17		6%
5.18	,	6%
5.19		6%
5.2	.	6%
5.20	.	6%
5.3		6%
5.5		6%
5.6	.	6%
5.7	-	6%
5.8		6%
5.9	.	6%

3.1.1.

		11
1.0		38%
2.0		32%
2.4		25%
3.0		30%
4.0		31%
4.1		6%
4.2		6%
4.3		6%
4.4		6%
4.5		6%
4.6		6%
4.7		6%
4.8		6%
4.9		6%
4.10		6%
4.11		6%
4.12		6%
4.13		6%
4.14		50%
4.15		50%
5.0		31%
5.1		6%
5.2		6%
5.3		6%
5.4		44%
5.5		6%
5.6		6%

3.1.1.

		11
5.7	-	6%
5.8		6%
5.9	.	6%
5.10	.	6%
5.11		6%
5.12		6%
5.13	()	6%
5.14	,	6%
5.15		6%
5.16		6%
5.17		6%
5.18	,	6%
5.19		6%
5.20	.	6%

3.2.

(%

),

		. % .
		38%
1.0		38%
		31%
2.0		32%
2.4		25%
		30%
3.0		30%
		13%
4.15		50%
4.14		50%
4.0		31%
4.13		6%
4.12		6%
4.11		6%
4.10		6%
4.9		6%
4.8		6%
4.7		6%
4.6		6%
4.5	,	6%
4.4		6%
4.3		6%
4.2	,	6%
4.1		6%

		. % .
		10%
5.4	.	44%
5.0		31%
5.20	.	6%
5.19		6%
5.18	,	6%
5.17		6%
5.16		6%
5.15		6%
5.14	,	6%
5.13	()	6%
5.12		6%
5.11		6%
5.10	.	6%
5.9	.	6%
5.8		6%
5.7	-	6%
5.6	.	6%
5.5		6%
5.3		6%
5.2	.	6%
5.1		6%

3.2.1.

(%),

			11
	1.0		38%
	2.0		32%
	2.4		25%
	3.0		30%
	4.0		31%
	4.1		6%
	4.2		6%
	4.3		6%
	4.4		6%
	4.5		6%
	4.6		6%
	4.7		6%
	4.8		6%
	4.9		6%
	4.10		6%
	4.11		6%
	4.12		6%
	4.13		6%
	4.14		50%
4.15		50%	
	5.0		31%
	5.1		6%
	5.2		6%
	5.3		6%
	5.4		44%
	5.5		6%
	5.6		6%

			11
5.7	-		6%
5.8			6%
5.9	.		6%
5.10	.		6%
5.11			6%
5.12			6%
5.13	()		6%
5.14	,		6%
5.15			6%
5.16			6%
5.17			6%
5.18	,		6%
5.19			6%
5.20	.		6%

3.3.

%

		.% .
1.1	/	46%
1.2	/	46%
1.3	/	46%
1.4	/	46%
1.5	/	46%
1.6	/	46%
1.7	/	46%
1.8	/	46%
2.1), (, , ,	35%
2.2	, ; -	28%
2.9	-	25%
2.5	,); (, , - ; , ; , ;	19%

3.3.1.

		11
1.1	/	46%
1.2	/	46%
1.3	/	46%
1.4	/	46%
1.5	/	46%
1.6	/	46%
1.7	/	46%
1.8	/	46%
2.1	(, , ,),	35%
2.2	;	28%
2.5	(, , , -); (, , -); , ;	19%
2.9	-	25%

3.4.1.

(%) ,

			11
/ :	1.1	/	46%
	1.2	/	46%
	1.3	/	46%
	1.4	/	46%
	1.5	/ ,	46%
	1.6	/	46%
	1.7	/ ,	46%
	1.8	/ -	46%
:	2.1	(, , ,),	35%
	2.2	;	28%
	2.5	(, , , ,); , - (, , , ,); , ;	19%
	2.9	-	25%

4.

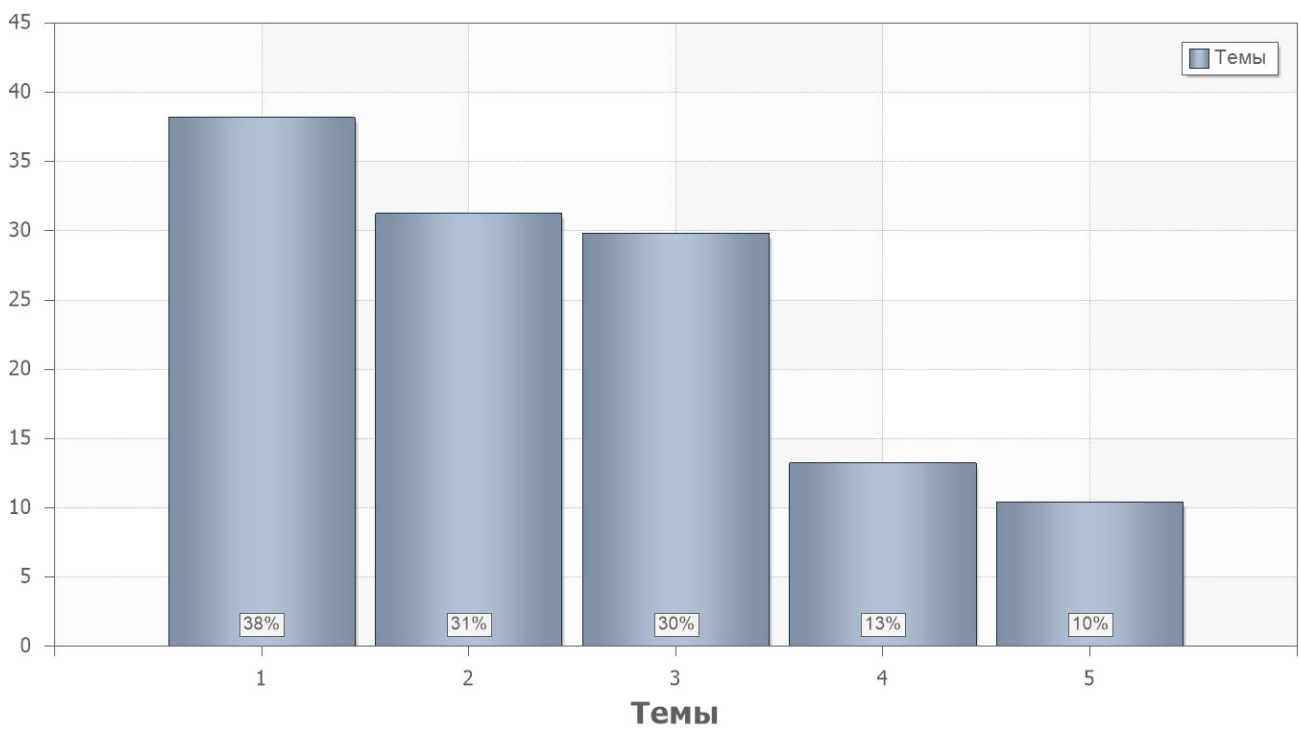
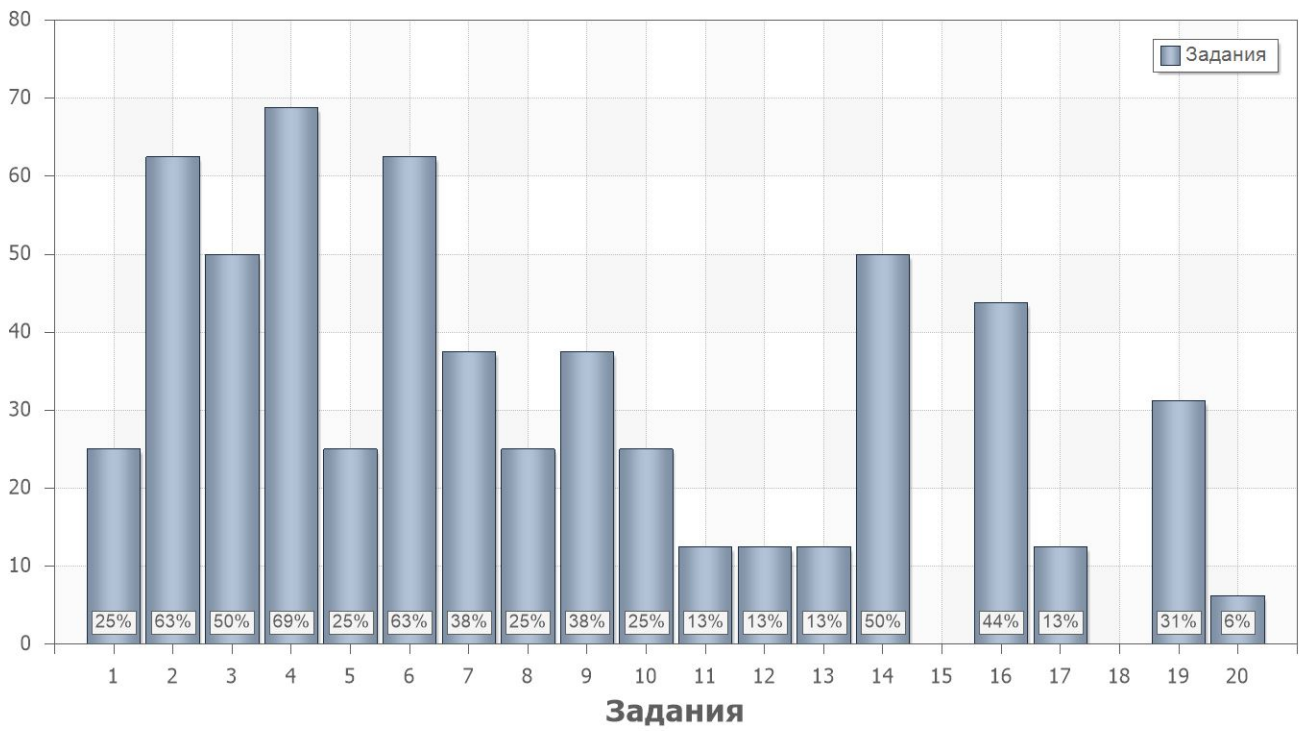
4.1.

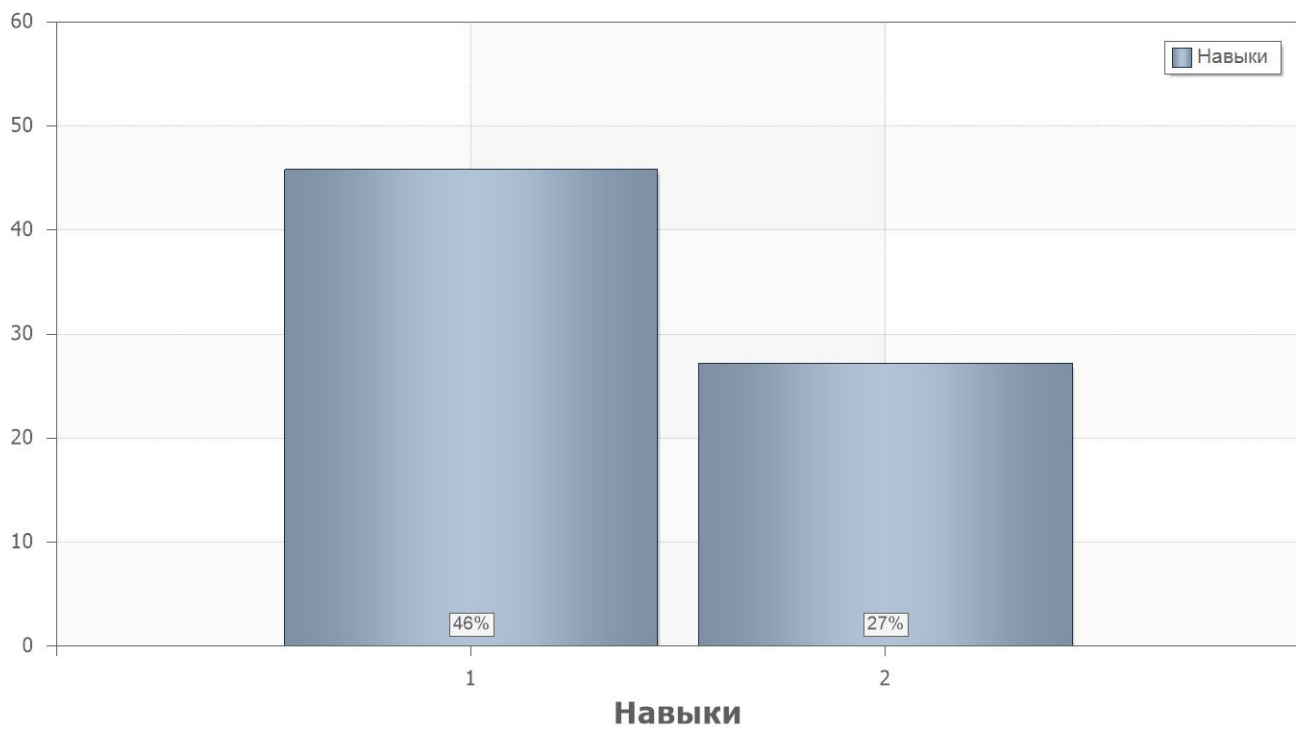
	. % .
2	24
1	34

4.2.

	. % .		
1			
1	25	1.0;2.0;3.0;4.0;5.0	1.1;1.2;1.3;1.4;1.5;1.6;1.7; 1.8
2	63	1.0;2.0;3.0;4.0;5.0	1.1;1.2;1.3;1.4;1.5;1.6;1.7; 1.8
3	50	1.0;2.0;3.0;4.0;5.0	1.1;1.2;1.3;1.4;1.5;1.6;1.7; 1.8
4	69	1.0	2.1
5	25	1.0	2.2
6	63	1.0	2.9
7	38	2.0	2.1
8	25	2.0	2.2
9	38	2.0	2.9
10	25	2.4	2.5
11	13	3.0	2.1
12	13	1.0;2.0;3.0;4.0;5.0	2.5
13	13	4.1;4.2;4.3;4.4;4.5;4.6;4.7; 4.8;4.9;4.10;4.11;4.12;4.13	2.1
14	50	4.14;4.15	2.2
15	0	4.1;4.2;4.3;4.4;4.5;4.6;4.7; 4.8;4.9;4.10;4.11;4.12;4.13	2.9
16	44	5.4	2.1

	. % .		
17	13	5.1;5.2;5.3;5.5;5.6;5.7;5.8; 5.9;5.10;5.11;5.12;5.13;5.1 4;5.15;5.16;5.17;5.18;5.19; 5.20	2.2
18	0	5.1;5.2;5.3;5.5;5.6;5.7;5.8; 5.9;5.10;5.11;5.12;5.13;5.1 4;5.15;5.16;5.17;5.18;5.19; 5.20	2.9
19	31	1.0;2.0;3.0;4.0;5.0	2.5
20	6	1.0;2.0;3.0;4.0;5.0	2.5





4.3.

Name	11
1	34%
2	24%

4.4.

PartIndex	Number	11
1	1	25%
	2	63%
	3	50%
	4	69%
	5	25%
	6	63%
	7	38%
	8	25%
	9	38%
	10	25%
	11	13%
	12	13%
	13	13%
	14	50%
	15	0%
	16	44%
	17	13%
	18	0%
	19	31%
	20	6%