

**ABBYY®**

1.				3
1.1.				3
2.				4
2.1.				4
2.2.				4
3.				6
3.1.				5
	%			
3.1.1.				8
3.2.		(%	),	9
3.2.1.		(%	),	11
3.3.				13
	%			
3.3.1.				14
3.4.		(%	),	15
3.4.1.		(%	)	16
	,			
4.				17
4.1.				17
4.2.				17
4.3.				21
4.4.				21

# 1.

## 1.1 Общие характеристики проведённой работы

1

13/9/2016 - 17/10/2016 .

- , 40

15.25

26

59%

## 2.

### 2.1.

	-	.	%
12	40	15.25	59%
	621	14.67	56%
" "	9808	14.58	56%
	13496	14.96	58%

### 2.2.

	-	.	%
9	21	16.90	65%
9	19	13.42	52%
12	40	15.25	59%

### 3.1.

%

		.% .
4.1		72%
4.2		72%
4.3		72%
1.4		68%
1.5		68%
1.6	( , , )	68%
1.7		68%
1.8		68%
2.2		68%
1.1		67%
1.2		67%
1.3		67%
4.4		65%
4.5		65%
4.6		65%
4.7		65%
2.3		59%
3.1		58%
3.2		58%
3.3		58%

3.4	,	58%
3.5	,	58%
3.6		58%
2.1		58%
2.4	,	58%
2.5	,	58%
3.10		54%
3.11	,	54%
3.12		54%
3.7	.	54%
3.8		54%
3.9		54%
1.0		38%
2.0		38%
3.0		38%
4.0		38%

### 3.1.1.

		9	9
1.0		29%	47%
1.1		59%	74%
1.2		59%	74%
1.3		59%	74%
1.4		63%	73%
1.5		63%	73%
1.6	( , , )	63%	73%
1.7		63%	73%
1.8		63%	73%
2.0		29%	47%
2.1		40%	74%
2.2		76%	60%
2.3		48%	70%
2.4		40%	74%
2.5		40%	74%
3.0		29%	47%
3.1		48%	68%
3.2		48%	68%
3.3		48%	68%
3.4		48%	68%
3.5		48%	68%
3.6		48%	68%
3.7		48%	59%

### 3.1.1.

		9	9
3.8		48%	59%
3.9		48%	59%
3.10		48%	59%
3.11		48%	59%
3.12		48%	59%
4.0		29%	47%
4.1		69%	74%
4.2		69%	74%
4.3		69%	74%
4.4		63%	67%
4.5		63%	67%
4.6		63%	67%
4.7		63%	67%



## 3.2.

(%

),

		. % .
		<b>63%</b>
1.8	,	68%
1.7	.	68%
1.6	( , , )	68%
1.5	.	68%
1.4		68%
1.3	,	67%
1.2		67%
1.1		67%
1.0		38%
		<b>62%</b>
4.3		72%
4.2	.	72%
4.1		72%
4.7		65%
4.6		65%
4.5	.	65%
4.4		65%
4.0		38%
		<b>55%</b>
3.6		58%
3.5	,	58%
3.4	,	58%
3.3		58%

		. % .
3.2	,	58%
3.1	,	58%
3.12		54%
3.11	,	54%
3.10		54%
3.9		54%
3.8		54%
3.7	.	54%
3.0		38%
		<b>53%</b>
2.2		68%
2.3	.	59%
2.5	.	58%
2.4	,	58%
2.1		58%
2.0		38%

**3.2.1.**

(% ),

			9	9
	1.0		29%	47%
	1.1		59%	74%
	1.2		59%	74%
	1.3	,	59%	74%
	1.4		63%	73%
	1.5	.	63%	73%
	1.6	( , , )	63%	73%
	1.7	.	63%	73%
	1.8	,	63%	73%
	2.0		29%	47%
	2.1		40%	74%
	2.2		76%	60%
	2.3	.	48%	70%
	2.4	, ,	40%	74%
	2.5	.	40%	74%
	3.0		29%	47%
	3.1	,	48%	68%
	3.2	, ,	48%	68%
	3.3		48%	68%
	3.4	,	48%	68%
	3.5	,	48%	68%
	3.6		48%	68%
	3.7	.	48%	59%
	3.8		48%	59%
	3.9		48%	59%
	3.10		48%	59%
	3.11	,	48%	59%
	3.12		48%	59%

			9	9
	4.0		29%	47%
	4.1		69%	74%
	4.2		69%	74%
	4.3		69%	74%
	4.4		63%	67%
	4.5		63%	67%
	4.6		63%	67%
	4.7		63%	67%

### 3.3.

%

		. % .
2.1	; ; ' -	71%
1.2	/	64%
1.3	/	64%
2.6	,	60%
1.1	/	58%
2.3	( , ) , ' ,	51%
2.2	; ,	44%
2.7	( ) ,	30%

### 3.3.1.

		9	9
1.1	/	48%	66%
1.2	/	54%	74%
1.3	/	54%	74%
2.1	; - ;	62%	79%
2.2	;	39%	48%
2.3	( , )	43%	58%
2.6	,	51%	68%
2.7	( , )	13%	46%

**3.4.**

(% ),

		.% .
/ :		<b>63%</b>
1.3	/	64%
1.2	/	64%
1.1	/ ,	58%
:		<b>56%</b>
2.1	; ; ' -	71%
2.6	,	60%
2.3	( , ) , ' ,	51%
2.2	;	44%
2.7	( , )	30%

3.4.1.

(% ) ,

			9	9
/ :	1.1	/ ,	48%	66%
	1.2	/	54%	74%
	1.3	/	54%	74%
:	2.1	; - ' ;	62%	79%
	2.2	; ' ;	39%	48%
	2.3	( , , ) ,	43%	58%
	2.6	,	51%	68%
	2.7	( , )	13%	46%



## 4.

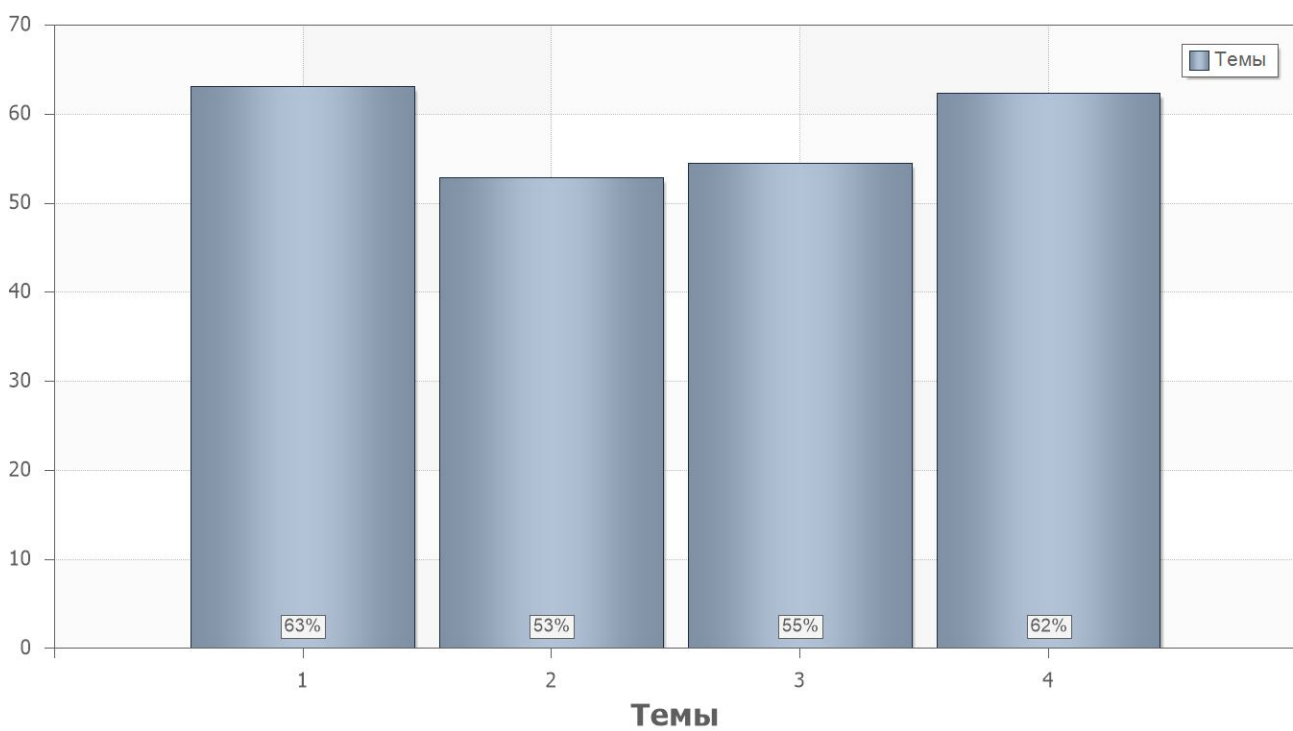
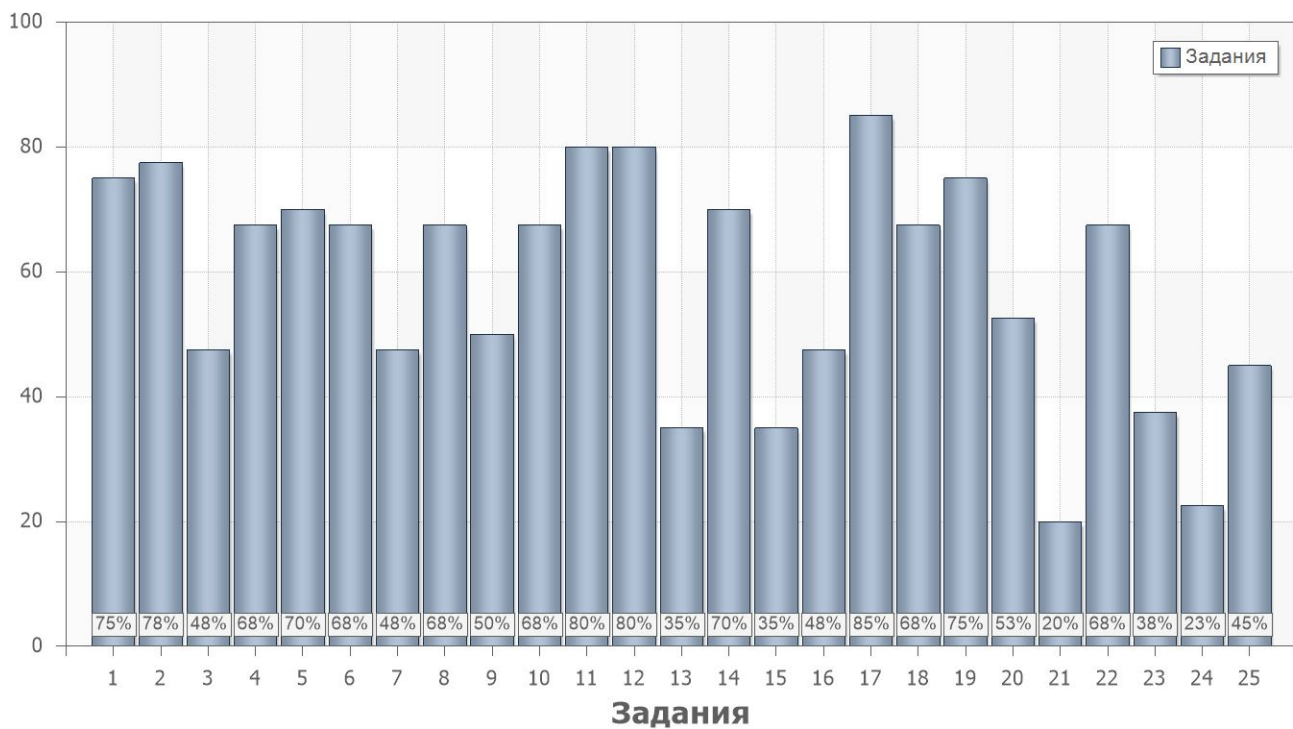
### 4.1.

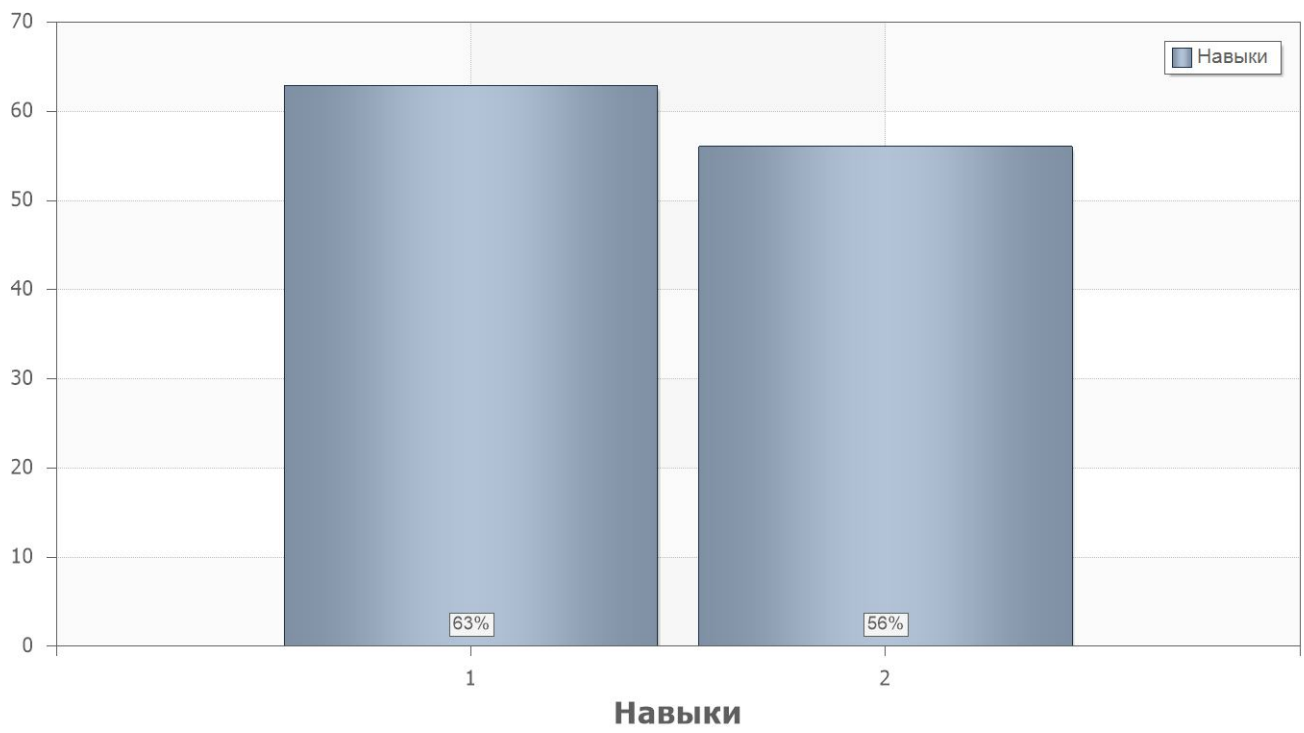
	. % .
2	55
1	63

### 4.2.

	. % .		
<b>1</b>			
1	75	1.1;1.2;1.3	1.2;1.3;2.1
2	78	1.1;1.2;1.3	2.6
3	48	1.1;1.2;1.3	1.1;1.2;1.3;2.3
4	68	1.4;1.5;1.6;1.7;1.8	1.2;1.3;2.1
5	70	1.4;1.5;1.6;1.7;1.8	2.6
6	68	1.1;1.2;1.3;1.4;1.5;1.6;1.7; 1.8	1.1;1.2;1.3;2.3
7	48	2.1;2.4;2.5	2.1;2.6
8	68	2.2	2.1
9	50	2.3	2.6
10	68	2.1;2.2;2.3;2.4;2.5	2.3
11	80	3.1;3.2;3.3;3.4;3.5;3.6	2.1
12	80	3.7;3.8;3.9;3.10;3.11;3.12	2.1
13	35	3.1;3.2;3.3;3.4;3.5;3.6;3.7; 3.8;3.9;3.10;3.11;3.12	2.3
14	70	3.1;3.2;3.3;3.4;3.5;3.6;3.7; 3.8;3.9;3.10;3.11;3.12	2.3
15	35	3.7;3.8;3.9;3.10;3.11;3.12	2.6
16	48	3.1;3.2;3.3;3.4;3.5;3.6;3.7; 3.8;3.9;3.10;3.11;3.12	2.3
17	85	4.1;4.2;4.3	2.1
18	68	4.4;4.5;4.6;4.7	2.1

	. % .		
19	75	4.1;4.2;4.3;4.4;4.5;4.6;4.7	2.6
20	53	4.1;4.2;4.3;4.4;4.5;4.6;4.7	2.3
21	20	1.0;2.0;3.0;4.0	2.2
22	68	1.0;2.0;3.0;4.0	2.2;2.3
23	38	1.0;2.0;3.0;4.0	2.3;2.7
24	23	1.0;2.0;3.0;4.0	2.3;2.7
25	45	1.0;2.0;3.0;4.0	2.2;2.3





### 4.3.

Name	9	9
1	56%	70%
2	48%	61%

### 4.4.

PartIndex	Number	9	9
1	1	58%	90%
	2	84%	71%
	3	37%	57%
	4	63%	71%
	5	68%	71%
	6	58%	76%
	7	16%	76%
	8	89%	48%
	9	32%	67%
	10	63%	71%
	11	63%	95%
	12	79%	81%
	13	21%	48%
	14	63%	76%
	15	32%	38%
	16	42%	52%
	17	74%	95%
	18	58%	76%
	19	68%	81%
	20	63%	43%
	21	21%	19%
	22	66%	69%
	23	26%	48%
	24	0%	43%
	25	32%	57%